



## Melody Device Firmware Upgrade Tool

# 1. Introduction

The Melody Device Firmware Upgrade Tool is a 32 bit Windows application that upgrades melody on the BC127 and BC128 to a newer version of Melody.

This application note describes the main functionality of the tool and how to use it to upgrade Melody.



## Melody Device Firmware Upgrade Tool

### Table of Contents

1. Introduction .....	1
2. Installation .....	3
3 Upgrading Melody .....	4
3.1 Introduction .....	4
3.2 How to Upgrade .....	5

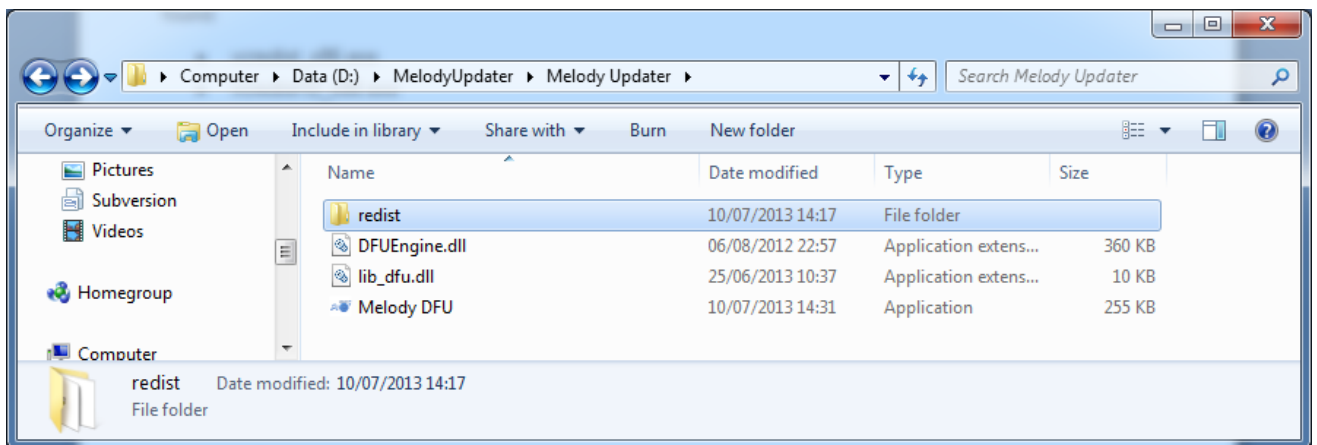


## Melody Device Firmware Upgrade Tool

### 2. Installation

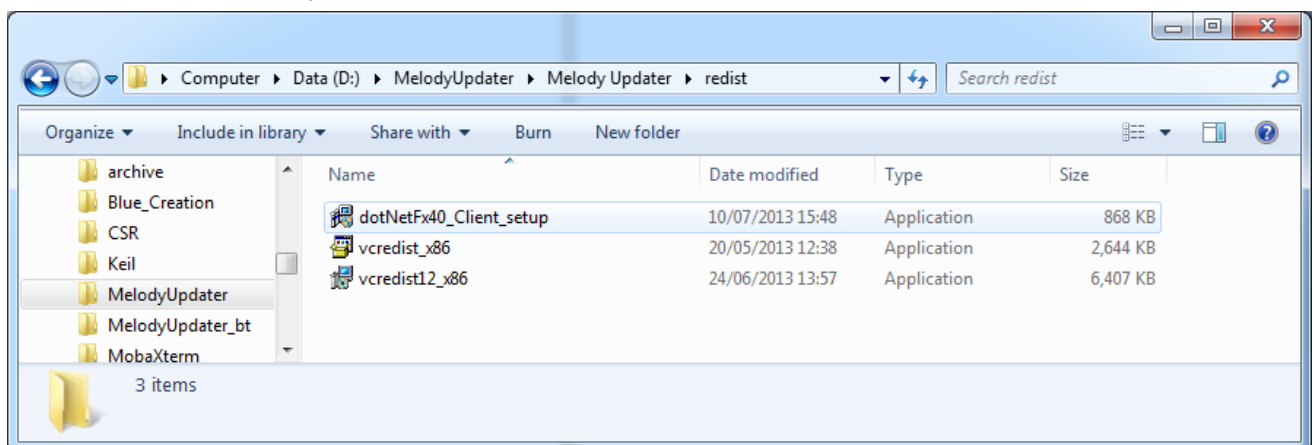
The tool has some prerequisites that needs to be available on the Windows machine to operate properly. After unpacking the tool to the desired location, you will end up to the following set of files:

- redist (folder)
- Melody DFU (application)
- DFUEngine.dll
- lib\_dfu.dll



If this is the first time running the tool on Windows, installing the prerequisites is required for the updater to work properly. The prerequisites are available in the redist folder, opening the redist folder, the following 2 files can be found:

- vcredist\_x86.exe
- vcredist12\_x86.exe
- dotNetFx40\_Client\_setup.exe



Run the executables to install the required dependencies on the windows machine.



## Melody Device Firmware Upgrade Tool

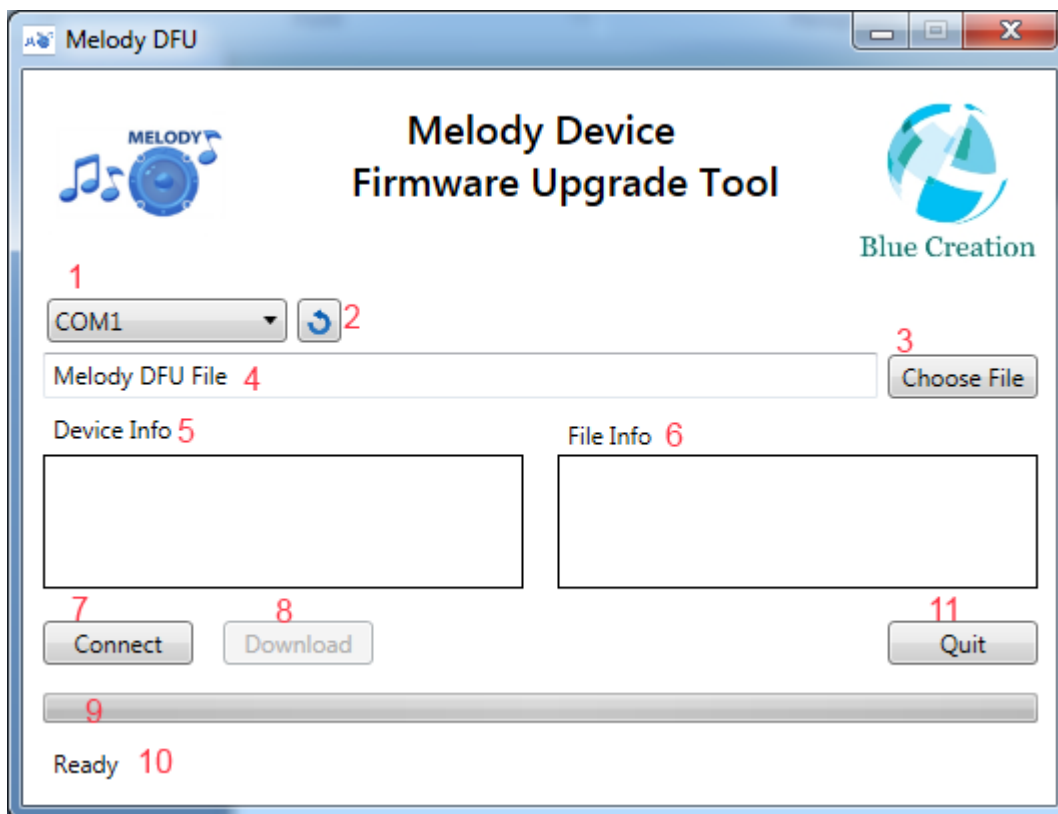
Once this step is finished, the upgrade tool can start by starting **Melody DFU** application.

Note that every time the upgrade tool is starting it will check for the prerequisites, but this step will not finish quickly.

# 3 Upgrading Melody

## 3.1 Introduction

Once Melody DFU is started, the following window will open.



The following is an outline of each part of the window:

1. The COM port where Melody is connected: this box is updated when the application is starting, therefore, it might not contain all the COM ports if they are connected to Windows afterwards.
2. Refresh the COM ports: In case the COM port is connected afterwards, this button can be used to refresh the available COM ports.
3. Select a DFU file: this will open a select file window to find the DFU file.
4. Once the file is selected, the full path will be displayed here.
5. Melody Info will be displayed here after connecting to a melody device.



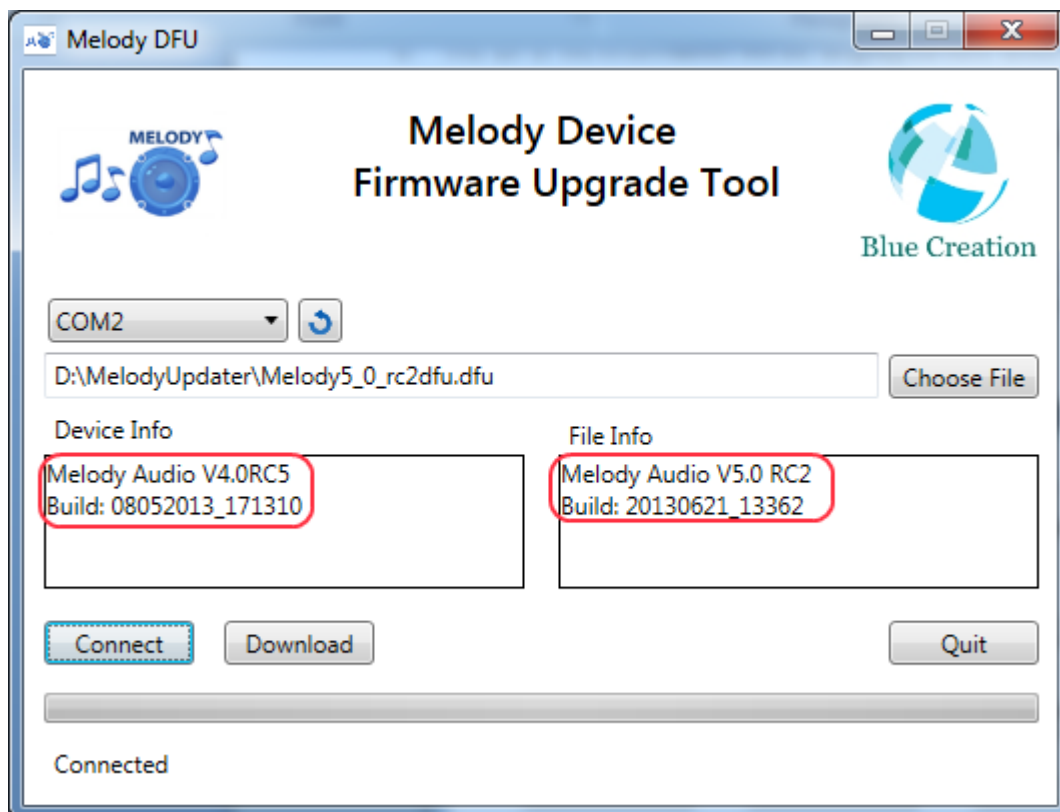
## Melody Device Firmware Upgrade Tool

6. The DFU file information will be displayed here once a melody DFU file is selected
7. Connect to melody using the COM port selected.
8. Download button will be highlighted when a melody device is connected. During a download, it is not possible to abort from within the application.
9. The progress bar will show the download progress.
10. This section will show the status of the upgrade process.

### 3.2 How to Upgrade

This section will go through the upgrade process after starting the application.

1. Select the correct COM port and press the **connect** button.
2. Select the DFU File
3. Check that the DFU file contains a new version and build date.



4. Press **Download** button to update.

When the progress bar reaches the end, allow a short while for the update to finalise since the application will be waiting for BC127 to get ready.



## Melody Device Firmware Upgrade Tool

